

# Model reduction of diffusion process along reaction coordinate and related issues

Wei Zhang

Freie Universität Berlin

joint work with Carsten Hartmann and Christof Schütte



# Outline

- Introduction
- Model reduction : effective dynamics
- Application : eigenvalue estimation

## Diffusion process

SDE on  $\mathbb{R}^n$

$$dx_s = -\nabla V(x_s)ds + \sqrt{2\beta^{-1}}dw_s$$

# Diffusion process

SDE on  $\mathbb{R}^n$

$$dx_s = -\nabla V(x_s)ds + \sqrt{2\beta^{-1}}dw_s$$

Generator  $\mathcal{L} = -\nabla V \cdot \nabla + \frac{1}{\beta}\Delta$

## Diffusion process

SDE on  $\mathbb{R}^n$

$$dx_s = -\nabla V(x_s) ds + \sqrt{2\beta^{-1}} dw_s$$

Generator  $\mathcal{L} = -\nabla V \cdot \nabla + \frac{1}{\beta} \Delta$

Invariant measure  $d\pi = \rho(x) dx$ , where

$$\rho(x) = \frac{1}{Z} e^{-\beta V(x)}, \quad \text{with } Z = \int_{\mathbb{R}^n} e^{-\beta V(x)} dx.$$

# Diffusion process

Hilbert space  $H = L^2(\mathbb{R}^n, \pi)$ ,

Inner product  $\langle f, g \rangle_\pi = \int_{\mathbb{R}^n} f(x) g(x) \rho(x) dx, \quad \forall f, g \in H,$

$\implies \langle \mathcal{L} f, g \rangle_\pi = \langle f, \mathcal{L} g \rangle_\pi.$

## Diffusion process

Hilbert space  $H = L^2(\mathbb{R}^n, \pi)$ ,

Inner product  $\langle f, g \rangle_\pi = \int_{\mathbb{R}^n} f(x) g(x) \rho(x) dx, \quad \forall f, g \in H,$

$\implies \langle \mathcal{L} f, g \rangle_\pi = \langle f, \mathcal{L} g \rangle_\pi.$

Eigenvalues of  $-\mathcal{L}$  :  $\lambda_i \in \mathbb{R}$  with

$$0 = \lambda_0 < \lambda_1 \leq \dots \leq \lambda_k \leq \dots,$$

and  $-\mathcal{L}\varphi_i = \lambda_i\varphi_i, \quad \varphi_0 \equiv 1.$

## Diffusion process

Hilbert space  $H = L^2(\mathbb{R}^n, \pi)$ ,

Inner product  $\langle f, g \rangle_\pi = \int_{\mathbb{R}^n} f(x) g(x) \rho(x) dx, \quad \forall f, g \in H,$

$\implies \langle \mathcal{L} f, g \rangle_\pi = \langle f, \mathcal{L} g \rangle_\pi.$

Eigenvalues of  $-\mathcal{L}$  :  $\lambda_i \in \mathbb{R}$  with

$$0 = \lambda_0 < \lambda_1 \leq \dots \leq \lambda_k \leq \dots,$$

and  $-\mathcal{L}\varphi_i = \lambda_i\varphi_i, \quad \varphi_0 \equiv 1.$

Question : How to estimate  $\lambda_1, \lambda_2, \dots$  numerically when  $n \gg 1$ ?



# Operators

Semigroup operator

$$(T_s f)(x) = \mathbf{E}(f(x_s) \mid x_0 = x), \quad f \in H, \quad s \geq 0.$$

# Operators

Semigroup operator

$$(T_s f)(x) = \mathbf{E}(f(x_s) \mid x_0 = x), \quad f \in H, \quad s \geq 0.$$

Transfer operator

$$(T_\tau u)(y) = \frac{1}{\rho(y)} \int_{\mathbb{R}^n} p(x, y; \tau) u(x) \rho(x) dx, \quad y \in \mathbb{R}^n,$$

where  $p(x, \cdot; \tau)$  is the p.d.f. at time  $\tau \geq 0$ .

# Operators

Semigroup operator

$$(T_s f)(x) = \mathbf{E}(f(x_s) \mid x_0 = x), \quad f \in H, \quad s \geq 0.$$

Transfer operator

$$(\mathcal{T}_\tau u)(y) = \frac{1}{\rho(y)} \int_{\mathbb{R}^n} p(x, y; \tau) u(x) \rho(x) dx, \quad y \in \mathbb{R}^n,$$

where  $p(x, \cdot; \tau)$  is the p.d.f. at time  $\tau \geq 0$ .

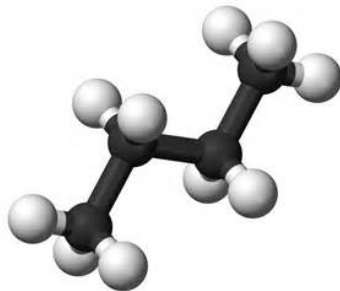
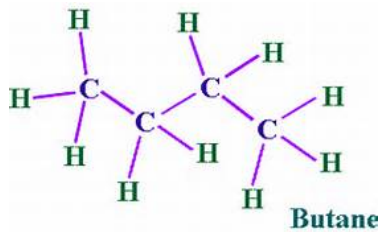
Connections :

$$\boxed{T_\tau = \mathcal{T}_\tau = e^{-\mathcal{L}\tau}}$$

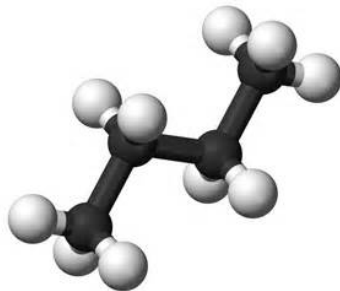
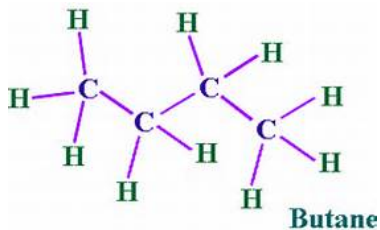
# Outline

- Introduction
- Model reduction : effective dynamics
- Application : eigenvalue estimation

# Motivation : Butane



## Motivation : Butane



Question : How to study the dynamics of the dihedral angle ?

## Effective dynamics

$$dx_s = -\nabla V(x_s) ds + \sqrt{2\beta^{-1}} dw_s$$

Reaction coordinate  $\xi : \mathbb{R}^n \rightarrow \mathbb{R}^m$

## Effective dynamics

$$dx_s = -\nabla V(x_s)ds + \sqrt{2\beta^{-1}}dw_s$$

Reaction coordinate  $\xi : \mathbb{R}^n \rightarrow \mathbb{R}^m$

$z \in \mathbb{R}^m$ ,  $f \in H$ , consider  $\Omega_z = \{x \in \mathbb{R}^n \mid \xi(x) = z\}$ ,



## Effective dynamics

$$dx_s = -\nabla V(x_s) ds + \sqrt{2\beta^{-1}} dw_s$$

Reaction coordinate  $\xi : \mathbb{R}^n \rightarrow \mathbb{R}^m$

$z \in \mathbb{R}^m$ ,  $f \in H$ , consider  $\Omega_z = \{x \in \mathbb{R}^n \mid \xi(x) = z\}$ ,

$$\begin{aligned} \mathbf{P}f(z) &= \int_{\Omega_z} f(x) d\mu_z(x) = \mathbf{E}_\pi(f(x) \mid \xi(x) = z), \\ &= \frac{1}{Q(z)} \int_{\mathbb{R}^n} \rho(x) f(x) \delta(\xi(x) - z) dx, \end{aligned}$$

$$Q(z) = \int_{\mathbb{R}^n} \rho(x) \delta(\xi(x) - z) dx, \quad \int_{\mathbb{R}^m} Q(z) dz = 1$$

## Effective dynamics

Apply Ito's formula to  $\xi(x_s) \implies$

$$d\xi_l(x_s) = \mathcal{L}\xi_l(x_s)ds + \sqrt{2\beta^{-1}} \sum_{i=1}^n \frac{\partial \xi_l}{\partial x_i}(x_s) dw_s^i, \quad 1 \leq l \leq m.$$

# Effective dynamics

Apply Ito's formula to  $\xi(x_s) \implies$

$$d\xi_l(x_s) = \mathcal{L}\xi_l(x_s)ds + \sqrt{2\beta^{-1}} \sum_{i=1}^n \frac{\partial \xi_l}{\partial x_i}(x_s) dw_s^i, \quad 1 \leq l \leq m.$$

This motivates the effective dynamics<sup>1</sup>

$$dz_s = \tilde{b}(z_s) ds + \sqrt{2\beta^{-1}} \tilde{\sigma}(z_s) dw_s, \quad z_s \in \mathbb{R}^m,$$

$$\tilde{b}_l(z) = \mathbf{P}(\mathcal{L}\xi_l),$$

with

$$\tilde{a}_{ll'}(z) = (\tilde{\sigma}\tilde{\sigma}^T)_{ll'}(z) = \mathbf{P}\left(\sum_{i=1}^n \frac{\partial \xi_l}{\partial x_i} \frac{\partial \xi_{l'}}{\partial x_i}\right).$$

1. Legoll and Lelièvre, Nonlinearity, 2010.

## Effective dynamics

Alternative expressions :

$$\tilde{b}_l(z) = \lim_{s \rightarrow 0^+} \mathbf{E} \left( \frac{\xi_l(x_s) - z_l}{s} \mid x_0 \sim \mu_z \right),$$

$$\tilde{a}_{ll'}(z) = \frac{\beta}{2} \lim_{s \rightarrow 0^+} \mathbf{E} \left( \frac{(\xi_l(x_s) - z_l)(\xi_{l'}(x_s) - z_{l'})}{s} \mid x_0 \sim \mu_z \right).$$

## Effective dynamics

Alternative expressions :

$$\tilde{b}_l(z) = \lim_{s \rightarrow 0^+} \mathbf{E} \left( \frac{\xi_l(x_s) - z_l}{s} \mid x_0 \sim \mu_z \right),$$
$$\tilde{a}_{ll'}(z) = \frac{\beta}{2} \lim_{s \rightarrow 0^+} \mathbf{E} \left( \frac{(\xi_l(x_s) - z_l)(\xi_{l'}(x_s) - z_{l'})}{s} \mid x_0 \sim \mu_z \right).$$

Infinitesimal generator of  $z_s$  is

$$\tilde{\mathcal{L}} = \sum_{l=1}^m \tilde{b}_l \frac{\partial}{\partial z_l} + \frac{1}{\beta} \sum_{l,l'=1}^m \tilde{a}_{ll'} \frac{\partial^2}{\partial z_l \partial z_{l'}},$$

We have

$$f = \tilde{f} \circ \xi \implies \mathbf{P}\mathcal{L}f = (\tilde{\mathcal{L}}\tilde{f}) \circ \xi.$$

## Effective dynamics

Unique invariant measure of  $z_s$  is  $d\nu = Q(z) dz$ .

$\tilde{\mathcal{L}}$  is self-adjoint on space  $\tilde{H} = L^2(\mathbb{R}^m, \nu)$ .

Let

$$0 = \tilde{\lambda}_0 < \tilde{\lambda}_1 \leq \tilde{\lambda}_2 \leq \dots$$

be the eigenvalues of  $-\tilde{\mathcal{L}}$  and  $\tilde{\varphi}_i \in \tilde{H}$  be orthonormal eigenfunctions.

# Effective dynamics — Time scales

## Proposition 1

For  $i \geq 0$ , we have

$$\lambda_i \leq \tilde{\lambda}_i \leq \lambda_i + \frac{1}{\beta} \int_{\mathbb{R}^n} |\nabla(\varphi_i - \tilde{\varphi}_i \circ \xi)(x)|^2 \rho(x) dx.$$

# Effective dynamics — Time scales

## Proposition 1

For  $i \geq 0$ , we have

$$\lambda_i \leq \tilde{\lambda}_i \leq \lambda_i + \frac{1}{\beta} \int_{\mathbb{R}^n} |\nabla(\varphi_i - \tilde{\varphi}_i \circ \xi)(x)|^2 \rho(x) dx.$$

Especially, let

$$\xi(x) = (\varphi_1(x), \varphi_2(x), \dots, \varphi_m(x)) \in \mathbb{R}^m,$$

Then  $\tilde{\lambda}_i = \lambda_i$ ,  $0 \leq i \leq m$ .



# Effective dynamics — Time scales

## Proposition 1

For  $i \geq 0$ , we have

$$\lambda_i \leq \tilde{\lambda}_i \leq \lambda_i + \frac{1}{\beta} \int_{\mathbb{R}^n} |\nabla(\varphi_i - \tilde{\varphi}_i \circ \xi)(x)|^2 \rho(x) dx.$$

Especially, let

$$\xi(x) = (\varphi_1(x), \varphi_2(x), \dots, \varphi_m(x)) \in \mathbb{R}^m,$$

Then  $\tilde{\lambda}_i = \lambda_i$ ,  $0 \leq i \leq m$ .

$\implies$  **Optimal** reaction coordinate function.

## Effective dynamics — Algorithms

Key issue : estimate coefficients in

$$dz_s = \tilde{b}(z_s) ds + \sqrt{2\beta^{-1}} \tilde{\sigma}(z_s) dw_s.$$

# Effective dynamics — Algorithms

Key issue : estimate coefficients in

$$dz_s = \tilde{b}(z_s) ds + \sqrt{2\beta^{-1}} \tilde{\sigma}(z_s) dw_s.$$

1. HMM-like, Blue Moon, constrained dynamics, ...

$$\tilde{b}_l(z) = \mathbf{P}(\mathcal{L}\xi_l),$$

$$\tilde{a}_{ll'}(z) = (\tilde{\sigma}\tilde{\sigma}^T)_{ll'}(z) = \mathbf{P}\left(\sum_{i=1}^n \frac{\partial \xi_l}{\partial x_i} \frac{\partial \xi_{l'}}{\partial x_i}\right).$$

2. Equation-free, ...

$$\tilde{b}_l(z) = \lim_{s \rightarrow 0^+} \mathbf{E}\left(\frac{\xi_l(x_s) - z_l}{s} \mid x_0 \sim \mu_z\right),$$

$$\tilde{a}_{ll'}(z) = \frac{\beta}{2} \lim_{s \rightarrow 0^+} \mathbf{E}\left(\frac{(\xi_l(x_s) - z_l)(\xi_{l'}(x_s) - z_{l'})}{s} \mid x_0 \sim \mu_z\right).$$

3. Extended system, TAMM, ...

# Outline

- Introduction
- Model reduction : effective dynamics
- Application : eigenvalue estimation

## Eigenvalue estimation <sup>1</sup>

Suppose  $N$  basis functions  $\psi_l = \tilde{\psi}_l \circ \xi$ ,  $1 \leq l \leq N$ , are given.

We want to apply Galerkin method to solve the eigenvalue problem

$$-\mathcal{L}f = \lambda f, \tag{1}$$

in the subspace  $\text{span}\{\psi_1, \psi_2, \dots, \psi_N\}$ .

# Eigenvalue estimation <sup>1</sup>

Suppose  $N$  basis functions  $\psi_l = \tilde{\psi}_l \circ \xi$ ,  $1 \leq l \leq N$ , are given.

We want to apply Galerkin method to solve the eigenvalue problem

$$-\mathcal{L}f = \lambda f, \quad (1)$$

in the subspace  $\text{span}\{\psi_1, \psi_2, \dots, \psi_N\}$ .

Write  $f = \sum_{i=1}^N \omega_i \psi_i$ ,

then  $(1) \implies CX = \lambda SX$ , with

$$C_{ll'} = \langle -\mathcal{L}\psi_l, \psi_{l'} \rangle_{\pi}, \quad S_{ll'} = \langle \psi_l, \psi_{l'} \rangle_{\pi}, \quad 1 \leq l, l' \leq N,$$

1. Noé and Nüske, Multiscale Model. Simul. 2013.  
Pérez-Hernández, Paul, et al. J. Chem. Phys. 2013.

## Eigenvalue estimation

Using  $\psi_l = \tilde{\psi}_l \circ \xi$  and  $\mathbf{P}\mathcal{L}\psi_l = (\tilde{\mathcal{L}}\tilde{\psi}_l) \circ \xi$ , we have

$$\mathbf{S}_{ll'} = \langle \psi_l, \psi_{l'} \rangle_\pi = \langle \tilde{\psi}_l, \tilde{\psi}_{l'} \rangle_\nu,$$

$$\mathbf{C}_{ll'} = \langle -\mathcal{L}\psi_l, \psi_{l'} \rangle_\pi = \langle -\tilde{\mathcal{L}}\tilde{\psi}_l, \tilde{\psi}_{l'} \rangle_\nu.$$

## Eigenvalue estimation

Using  $\psi_l = \tilde{\psi}_l \circ \xi$  and  $\mathbf{P}\mathcal{L}\psi_l = (\tilde{\mathcal{L}}\tilde{\psi}_l) \circ \xi$ , we have

$$S_{ll'} = \langle \psi_l, \psi_{l'} \rangle_\pi = \langle \tilde{\psi}_l, \tilde{\psi}_{l'} \rangle_\nu,$$

$$C_{ll'} = \langle -\mathcal{L}\psi_l, \psi_{l'} \rangle_\pi = \langle -\tilde{\mathcal{L}}\tilde{\psi}_l, \tilde{\psi}_{l'} \rangle_\nu.$$

Since  $\nu$  is the invariant measure of  $z_s$ ,

$$\begin{aligned} S_{ll'} &= \lim_{T \rightarrow +\infty} \frac{1}{T} \int_0^T \tilde{\psi}_l(z_s) \tilde{\psi}_{l'}(z_s) ds \\ &\approx \frac{1}{M - M_0} \sum_{i=M_0+1}^M \tilde{\psi}_l(z_{i\Delta t}) \tilde{\psi}_{l'}(z_{i\Delta t}). \end{aligned}$$



## Eigenvalue estimation

Similarly, let  $\tau$  be a small parameter,

$$\begin{aligned} C_{ll'} &= - \lim_{s \rightarrow 0} \lim_{T \rightarrow +\infty} \frac{1}{T} \int_0^T \frac{\tilde{\psi}_{l'}(z_{t+s}) - \tilde{\psi}_{l'}(z_t)}{s} \tilde{\psi}_l(z_t) dt \\ &\approx - \frac{1}{2(M - M_0)\tau} \sum_{i=M_0+1}^M \left[ \tilde{\psi}_l(z_{i\Delta t + \tau}) \tilde{\psi}_{l'}(z_{i\Delta t}) \right. \\ &\quad \left. + \tilde{\psi}_l(z_{i\Delta t}) \tilde{\psi}_{l'}(z_{i\Delta t + \tau}) - 2\tilde{\psi}_l(z_{i\Delta t}) \tilde{\psi}_{l'}(z_{i\Delta t}) \right]. \end{aligned}$$

# Eigenvalue estimation

Similarly, let  $\tau$  be a small parameter,

$$\begin{aligned} C_{II'} &= - \lim_{s \rightarrow 0} \lim_{T \rightarrow +\infty} \frac{1}{T} \int_0^T \frac{\tilde{\psi}_{I'}(z_{t+s}) - \tilde{\psi}_{I'}(z_t)}{s} \tilde{\psi}_I(z_t) dt \\ &\approx - \frac{1}{2(M - M_0)\tau} \sum_{i=M_0+1}^M \left[ \tilde{\psi}_I(z_{i\Delta t + \tau}) \tilde{\psi}_{I'}(z_{i\Delta t}) \right. \\ &\quad \left. + \tilde{\psi}_I(z_{i\Delta t}) \tilde{\psi}_{I'}(z_{i\Delta t + \tau}) - 2\tilde{\psi}_I(z_{i\Delta t}) \tilde{\psi}_{I'}(z_{i\Delta t}) \right]. \end{aligned}$$

$\implies$  We can approximate eigenvalues of  $CX = \lambda SX$ , and therefore  $-\mathcal{L}f = \lambda f$ , by simulating the **effective dynamics**.

## Eigenvalue estimation — A simple 2D example

Potential  $V(x) = V_1(\theta) + \frac{1}{\epsilon} V_2(r, \theta),$

$$V_1(\theta) = \begin{cases} \left[1 - \frac{9}{\pi^2} \left(\theta - \frac{\pi}{3}\right)^2\right]^2 & \theta > \frac{\pi}{3}, \\ \frac{3}{5} - \frac{2}{5} \cos 3\theta & -\frac{\pi}{3} < \theta < \frac{\pi}{3} \\ \left[1 - \frac{9}{\pi^2} \left(\theta + \frac{\pi}{3}\right)^2\right]^2 & \theta < -\frac{\pi}{3}, \end{cases}$$

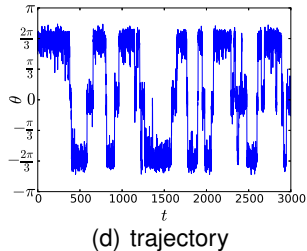
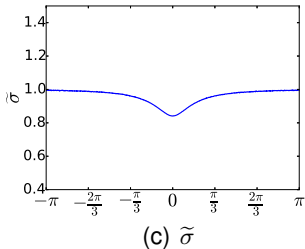
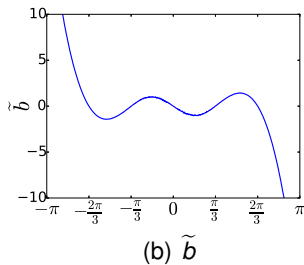
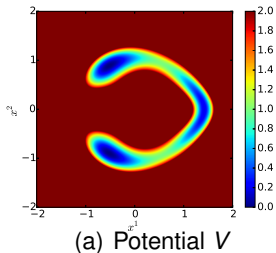
$$V_2(r, \theta) = \left(r^2 - 1 - \frac{1}{1 + 4r\theta^2}\right)^2.$$

Dynamics  $dx_s = -\nabla V(x_s) ds + \sqrt{2\beta^{-1}} dw_s.$

$\beta = 4.0, \epsilon = 0.05, \quad \xi(x) = \theta(x) \in [-\pi, \pi].$

9 Gaussian basis functions.  $\tau = 20\Delta t.$

# Eigenvalue estimation — A simple 2D example



# Eigenvalue estimation — A simple 2D example

$\mathcal{L}$	0.0000	0.0102	0.0438	1.4579
$\tilde{\mathcal{L}}$	0.0000	0.0123	0.0430	2.0676
Eff-MC	$2.02 \times 10^{-7}$	0.0154	0.0444	2.3409

Table: First 4 eigenvalues.

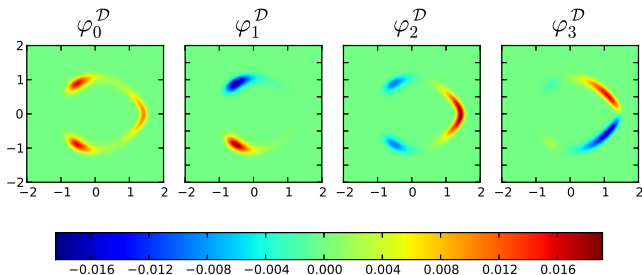


Figure: First 4 eigenfunctions of operator  $e^{-\frac{\beta V}{2}} \mathcal{L} e^{\frac{\beta V}{2}}$ .

# Conclusions

Summary :

1. Introduction
2. Model reduction : effective dynamics
3. Application : eigenvalue estimation

# Conclusions

## Summary :

1. Introduction
2. Model reduction : effective dynamics
3. Application : eigenvalue estimation

## Related topics & future work :

1. How to choose reaction coordinate, basis functions
2. Langevin dynamics
3. Algorithms for simulating effective dynamics.

Thank you !