

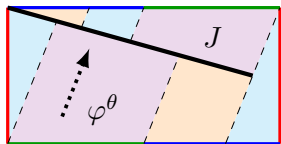
Linear flow on \mathbb{Z}^m - covers of translation surfaces

Yuriy Tumarkin (University of Zurich)

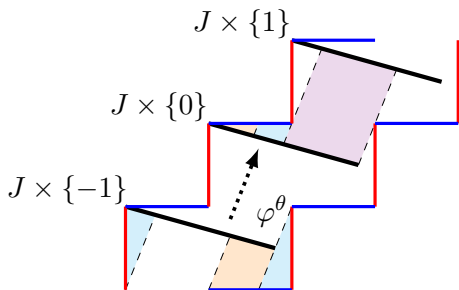
Le Teich, 4th March 2024

Example: the infinite staircase

Genus 1 surface S



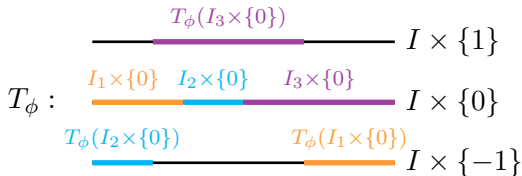
\mathbb{Z} - cover \tilde{S}



Poincaré section: IET

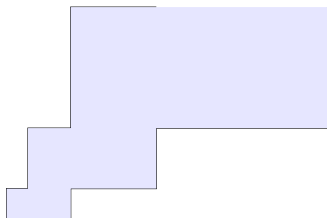


Poincaré section: skew-product



Definition

Maharam measures: measures which rescale under the Deck group action.



Theorem (T. '23)

For a skew-product T_ϕ that is periodic under Rauzy-Veech renormalisation, the ergodic invariant measures are precisely the Maharam measures.